

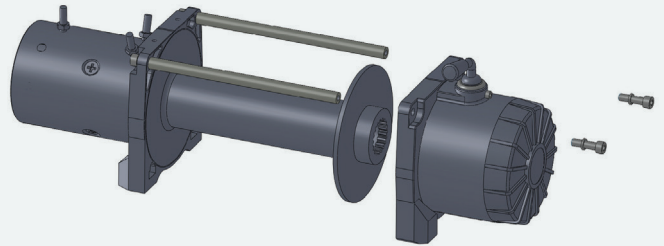
**STANDARD SERIES**

# GEARBOX ROTATION GUIDE

11XP / ALL EWX MODELS / ALL HWX MODELS

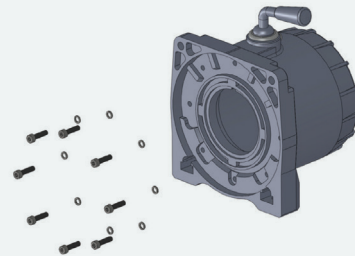
## 1 STEP 1

Remove the 2 bolts on the gearbox housing which holds the tie bars in place.



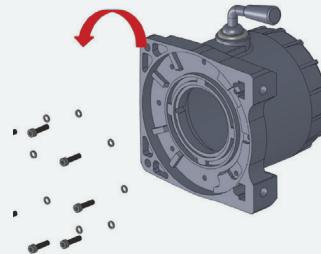
## 2 STEP 2

Pull the gearbox away from the winch and remove the 8 bolts.



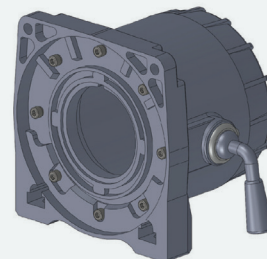
## 3 STEP 3

Rotate the gearbox housing into the desired position.  
Each bolt hole represents a 45 degree rotation.



## 4 STEP 4

Place the 8 bolts back into the gearbox housing and tighten.



## 5 STEP 5

Slide the gearbox back onto the winch drum and tighten the two bolts you removed during Step 1.

